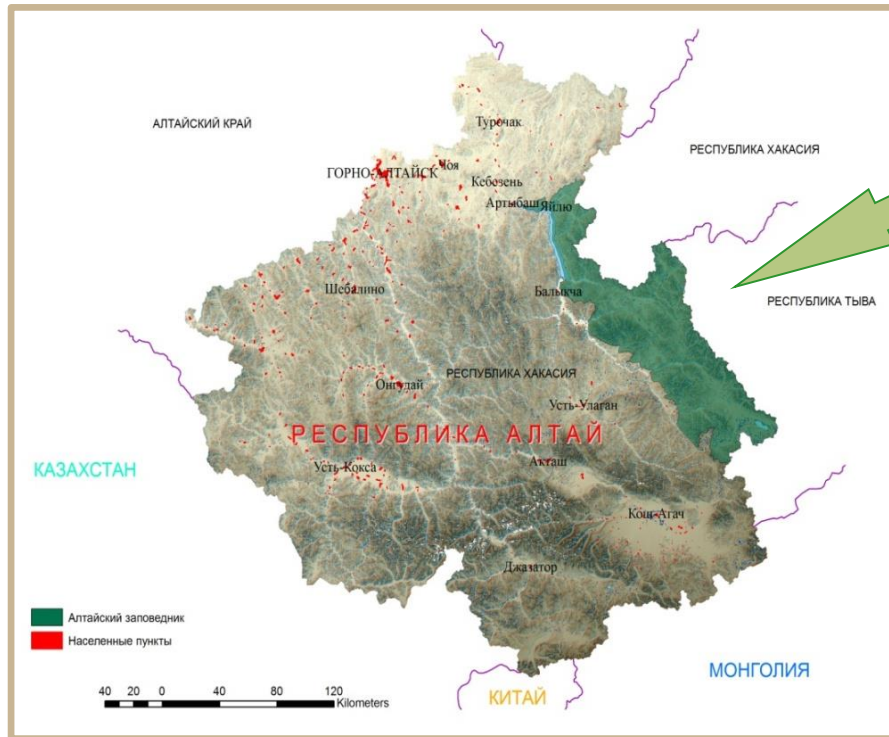


Altai State Nature Biosphere
Reserve as a key component
of the territory of UNESCO
World Heritage Site

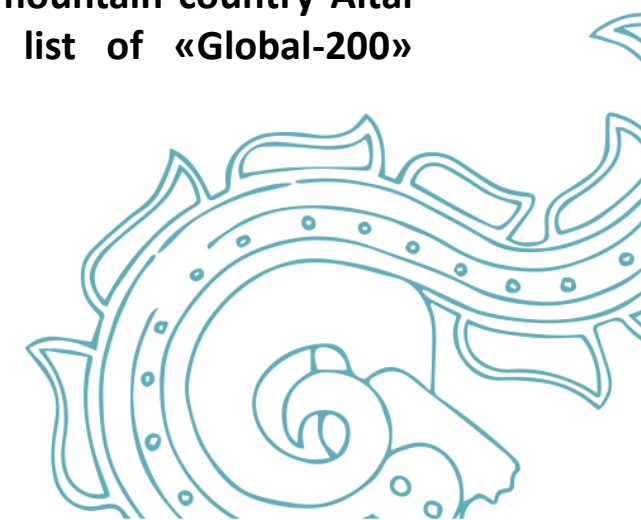


LOCATION

- Russia
- Altai-Sayan Ecoregion
- Altai Republic



Part of Altai-Sayan mountain country Altai reserve is on the list of «Global-200» (WWF)



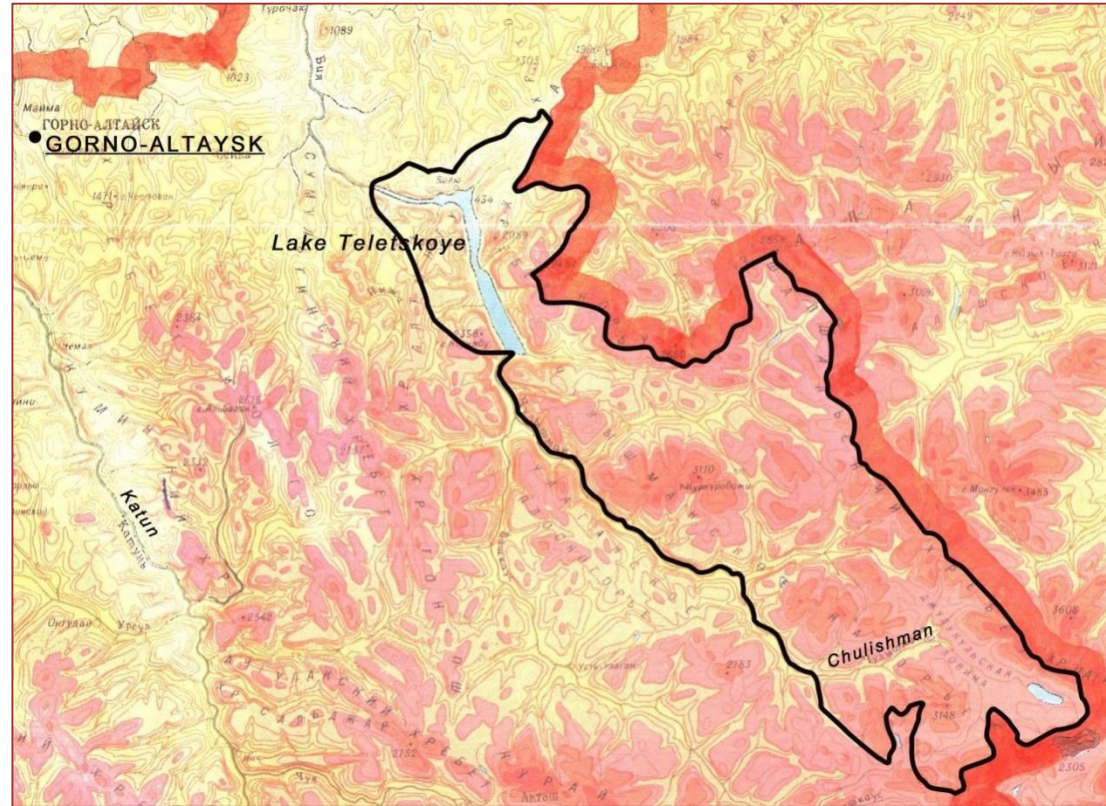
03



- Created in 1932
- UNESCO World Heritage site (from 1998)
- Among top 5 most biodiverse nature reserves in Russia
- Among 10 largest nature reserves in Russia (871 206 hectares)
- Takes up 10 % of Altai Republic territory
- Much of the reserve is located at the junction of Altai and Sayan mountain systems.

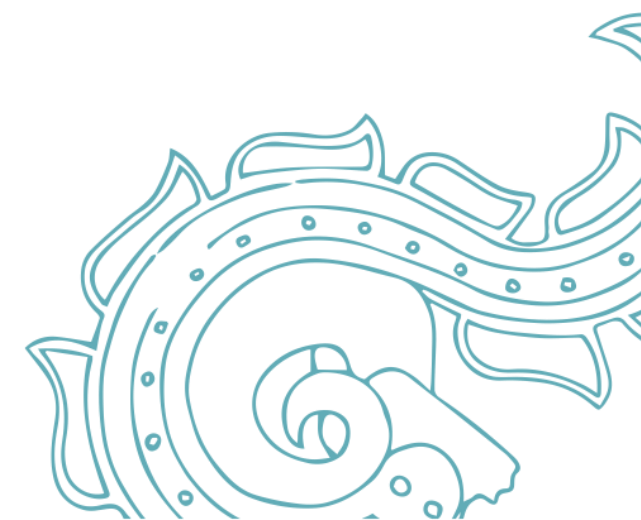


Part of the UNESCO World Heritage Site “The Golden Mountains of Altai”



Right Bank territory and water area of the lake Teletskoye are part of the UNESCO World Heritage Site

_____ The boundary of the UNESCO World Heritage site



05

Protection and Monitoring of rare species



Altai Reserve -
one of the leaders in the Altai-Sayan
region for the protection and monitoring
of rare species

**Regularly held events on the Protection
and Monitoring :**

Since 1994 - Altai argali mountain sheep
(Including, in the territory of the entire
Republic of Altai, and in the cross-border
area of Russia and Mongolia)



Since 2003 - Snow Leopard (leopard)
(including, in the territory of the whole
Republic of Altai)



In 2015, it confirmed habitation of wild forest reindeer in the Altai Reserve

06

Environmental monitoring

Yailu settlement

- ✓ since 1931 - hydro meteorological station.
- ✓ since 1965 - Teletskaya Hydrometeorological Station.
- ✓ since 1995 - integrated background monitoring station



Station integrated background monitoring Gorno-Altai Center for Hydrometeorology and Environmental Monitoring



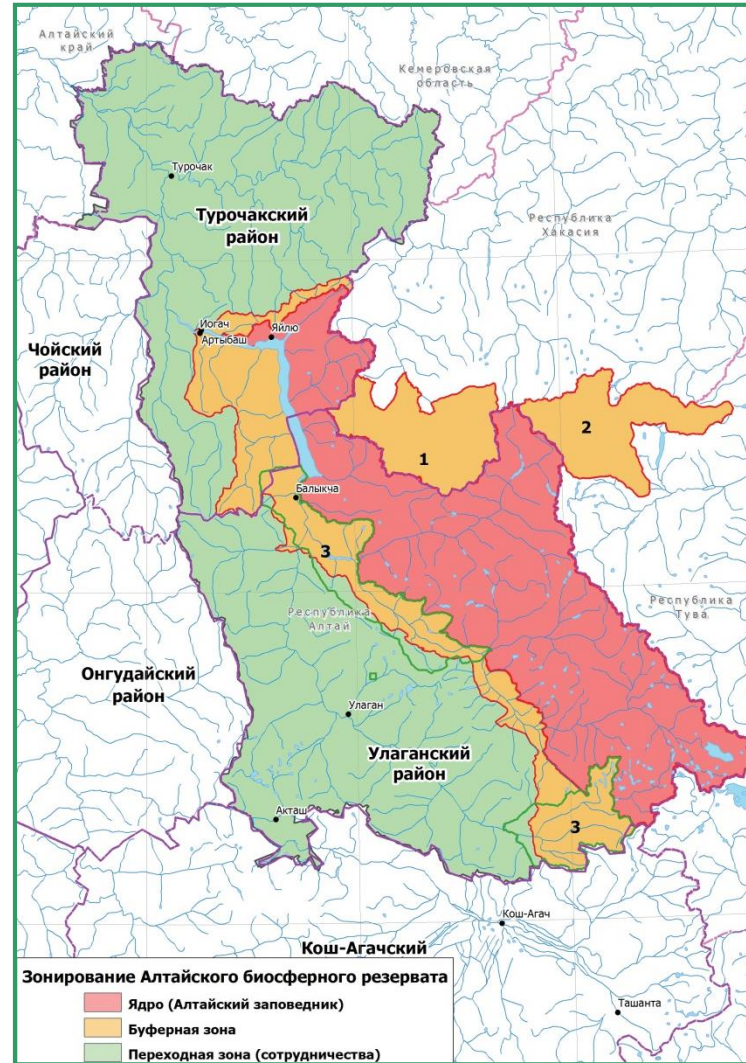
Altai Biosphere Territory

The territory of the Altai Biosphere Reserve covers an area of 3522204 hectares:

The core area -
871,206 hectares (25%)

The area of the buffer zone - 962 800 ha (27%)

Area of the transition zone (zone of cooperation) - 1,688,198 ha (48%)



Notation of numbers:

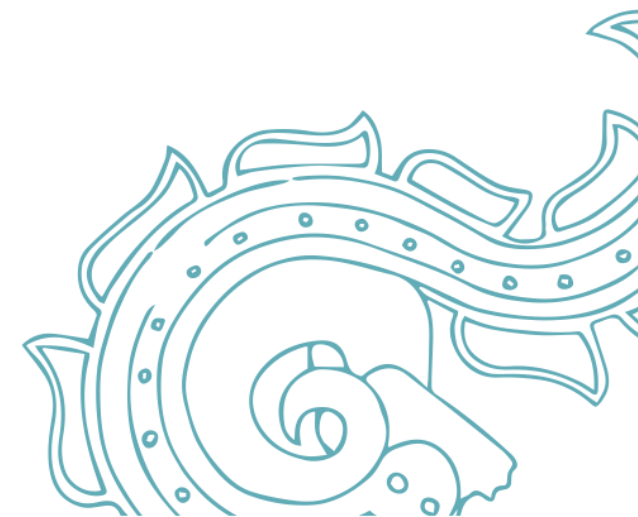
1. Zaimka Lykov, Khakassia biosphere reserve, Khakassia
2. Cluster Kara-Khol, biosphere reserve "Uvs Nuur Basin" Tyva
3. The natural park of regional significance "Ak Cholushpa"

08

Local population



The Altai Biosphere territory has rural population, represented by diverse ethnicities, religions, and traditions



“Unite and collaborate”



**Non-profit organization
“Council of Teletskoe Lake”**



**Community council
“Reserve Village”
(established on the foundation of
existing community council that was
created in 2007)**

10

Collaborative projects



Ethnic music albums: “Altai Kabay” and “Altai Tele”



Support of the local population

Since 2014 performed a project to support rural initiatives, the development of civil society ("spark of hope for the Russian villages") (in 2015 issued 19 grants totaling 1,461,600 rubles)

Since 2012 it implemented a program granting interest-free micro-loans to the local population for the development of eco and rural tourism (Supported 104 projects for a total amount of 5,205,200 rubles)



12

Media Club 'Reserve without Borders'



The purpose of the club is to unite representatives of the region's mass media for a broad public information share about the Altai Biosphere Reserve work. Together with journalists, Altai Biosphere Reserve annually develops a strategic and action plan for communication.



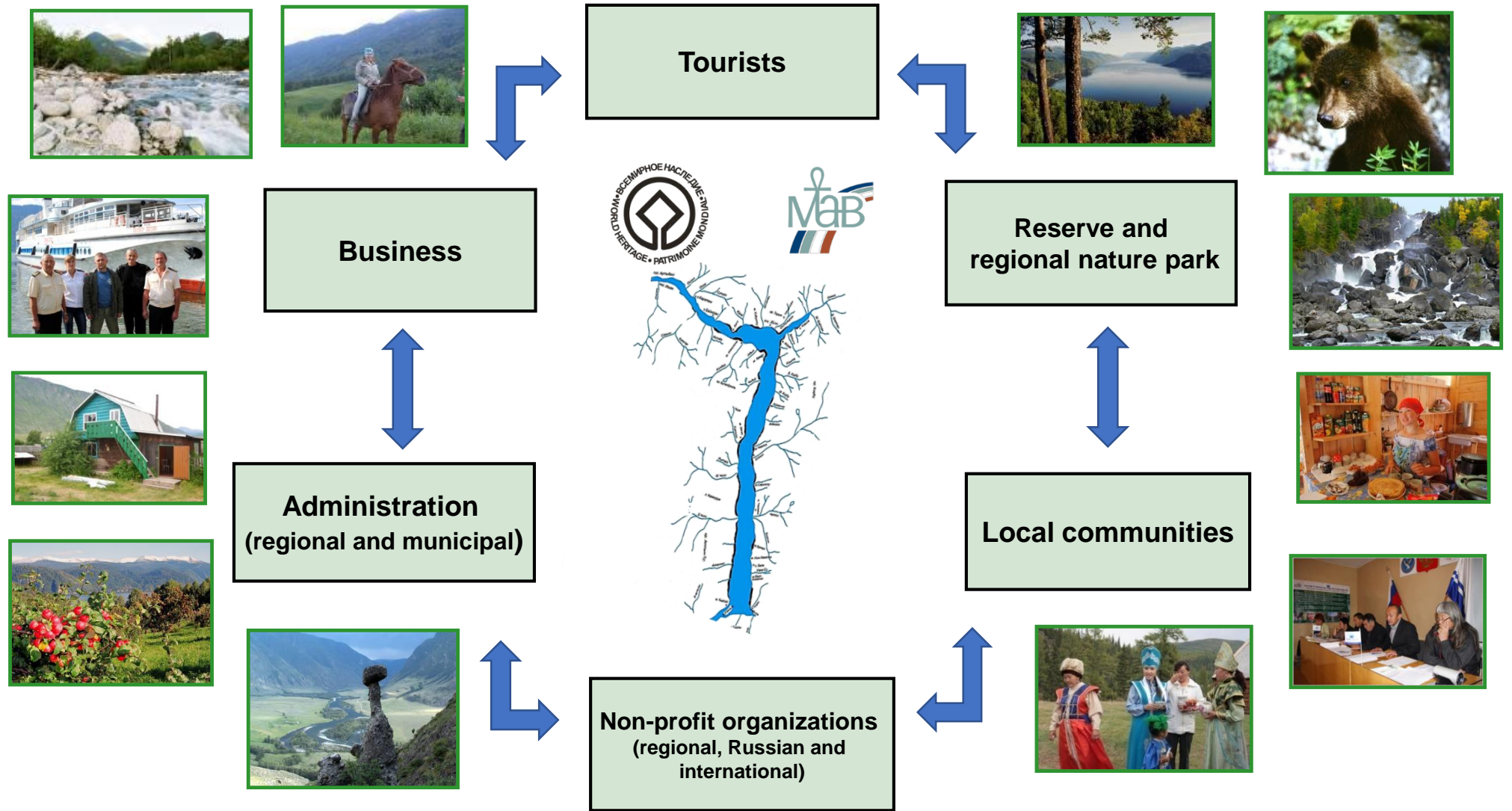
Support of the local population



Creation of jobs at the tourist attractions of Altai Reserve



Partnership as an instrument for the conservation of the World Natural Heritage





Thank you!



АЛТАЙСКИЙ

ГОСУДАРСТВЕННЫЙ ПРИРОДНЫЙ
БИОСФЕРНЫЙ ЗАПОВЕДНИК
ОСНОВАН В 1932 ГОДУ

altzapoved.ru